




June 2018

See Gallery Tour Map for gallery location (pg.3)

-  Music Event
-  Meet the Artist
-  Demonstration

GALLERY MEMBERS

1 AMERICAN TRAILS

250 E. Main Street
541-482-2553 • americantrails.com
Indigenous arts and crafts, native american jewelry and wildlife gallery

2 ART AND SOUL GALLERY

247 E. Main Street
541-488-9006 • www.artandsoulgallery.com
"A Reminiscence" Oil Paintings by Penny Simmons

3 ASHLAND ART CENTER

357 E. Main Street
541-482-2772 • www.AshlandArtCenter.org
Your gateway to the visual arts experience

4 ASHLAND ART WORKS

291 Oak Street
541-488-4735 • www.ashlandartworks.com
Five galleries & gardens on the creek; local artists

5 CVA GALLERIES AT SOU

1250 Siskiyou Blvd
541-551-6387 • www.sou.edu/art/galleries/index.html
Spring Exhibitions

6 GALLERIE KARON

500 A Street, Suite 1
541-482-9008
Husbands, Wives and Lovers

7 GALT GALLERY

40 N. Main Street Claycomb Mall, Ashland, OR 97520
541-625-4014 • www.galtgallery.com

8 HANSON HOWARD GALLERY

89 Oak Street
541-488-2562 • www.hansonhowardgallery.com
Jon Jay Cruson, landscape paintings and Robin & John Gumaelius, ceramic sculptures

9 HOUSTON'S CUSTOM FRAMING & FINE ART

280 E. Hersey St., #11
541-482-1983 • www.houstonscustomframing.com
Selected works by Russell Chatham, Thomas M. Houston, Stephen McMillan and Yugi Hiratsuka

10 NIMBUS

25 E. Main Street
541-482-3621 • www.clubnimbus.net
Contemporary paintings, glass, wood, ceramics and jewelry

11 PHOTOGRAPHERS' GALLERY

357 E. Main Street
541-482-2772 • www.ashlandphotographersgallery.com
John Christer Petersen: Bandon at Waters' Edge

12 SCHNEIDER MUSEUM OF ART

1250 Siskiyou Boulevard
541-552-6245 • sma.sou.edu
The Animated Image

13 THE WEB•STERS, INC.

11 N. Main Street
541-482-9801 • www.yarnatwebsters.com
A superb collection of American made "Art to Wear"

ASSOCIATE MEMBERS

14 ASHLAND NATURAL MEDICINE ANM GALLERY OF CONTEMPORARY ART

180 Lithia Way, #103
541-414-7320 • ashlandnaturalmedicine.com
Featuring local contemporary artists

15 THE CROWN JEWEL

266 E. Main Street
541-488-2401
www.thecrownjewel.net
Jewelry and gifts with meaning, rotating local art

16 HILL STATION

287 Fourth Street • www.hillstationashland.com
Hand crafted fine décor, tribal art and housewares from India

17 LITHIA ARTISANS MARKET OF ASHLAND (LAMA)

Calle Guanajuato, Lower Lithia Park
1-888-303-2826 • www.lithiaartisansmarket.com
Weekends, outdoor, locally made art, craft, and music.

18 MANZANITA HOME+FLOWERS+GIFTS

55 N. Main Street
541-488-1588
Artisan crafted pottery, lamps, textiles, wall decor, fresh flowers

19 MASTERPIECE CHRISTIAN FINE ARTS FOUNDATION

175 Lithia Way
541-601-7496 • www.mcfineartsfoundation.org
"Beauty and Light" – Featuring Art by Sheri Dinardi at Ashland Pony Espresso, June 1st, 2018

20 MOUNTAIN PROVISIONS

27 N. Main Street
541-708-6350 • www.ashlandmountainprovisions.com
Curated collection of outdoor equipment, apparel, photography

21 ROGUE COWORKS

64 N. Pioneer Street
541-941-3252
www.gorogue.com
Jessica Lee Findleton

22 SHEPHERD'S DREAM

42 East Main Street
541-708-5439 • www.shepherdsdream.com
Heather Brunetti "Manifest Magik"

23 ZAGORSKA OASIS SPA & SALT CAVE

111 E. Main Street
541-810-8877
www.ZagorskaOasis.com
Eco-luxe Spa & Salt Cave displaying local art

RESTAURANTS, WINERIES & WINE BARS

24 BELLE FIORE ESTATE & WINERY

100 Belle Fiore Lane
541-552-4900 • www.bellefiorewine.com/Art
Old-world charm, fine wines, & appreciation for local art.

25 CREEKSIDE PIZZA

92 1/2 N. Main Street
541-482-4131 • www.creeksidepizza.com
Gourmet pizzeria features unique local artists

26 ENOTECA BY EDEN VALE WINE BAR & BISTRO

17 N. Main Street
541-482-3377 • www.edenvalleyorchards.com
Southern Oregon wines, tapas, inviting atmosphere & art

27 LIQUID ASSETS WINE BAR

96 N. Main Street
541-482-WINE (9463) • www.liquidassetswinebar.com
Unique monthly displays feature a broad range of media

28 SMITHFIELDS RESTAURANT

36 S. Second Street
541-488-9948 • SmithfieldsAshland.com
"Nose-to-tail" dining; art by Sarah F Burns

WORKING STUDIO MEMBERS

29 DENISE KESTER STUDIO

438 Helman Street
541-778-2673 • www.drawingonthedream.com
Monoprints and Handmade books

30 GATHERING GLASS STUDIO

322 N. Pioneer Street
541-488-4738 • www.gatheringglass.com
Blown art glass, demos, custom work & classes

31 NUMINOUS STUDIO WEST

847 Pavilion Place
541-708-5141 • www.numinousstudiowest.com
Mixed media works on paper & digital

32 OAK LEAF STUDIO

247 Oak Street
541-488-5756 • www.oakleafstudio.net
Home Portrait Program

33 PUMPHOUSE STUDIOS

2000 Ashland Mine Road
541-973-3103 • www.pumphousestudios.etsy.com
Julia Janeway, ceramics

34 STUDIO 151

151 N Pioneer Street
studio151ashland.com
Robert Jaffe Photographs

35 STUDIO A.B

621 A Street
541-482-2253 • studioa-b.com
20th Anniversary Celebration
Ann DiSalvo: drawings; B. Bayard: digital collage



Studio A.B
20 Year Anniversary Celebration

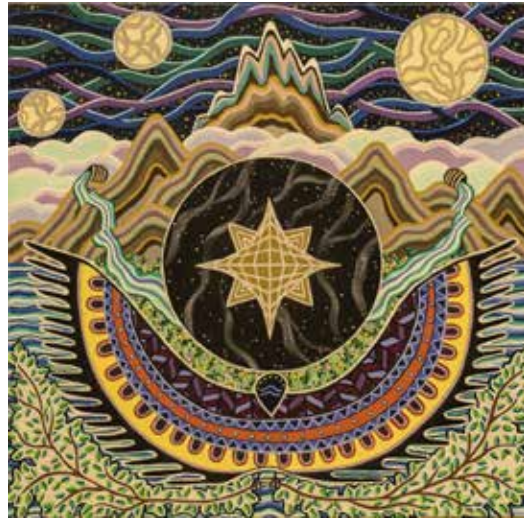
Studio A.B in Ashland is marking their 20th anniversary with a weekend celebration June 1, 2 and 3, kicking off the festivities during the First Friday Artwalk 5 to 8pm, and following that on Saturday and Sunday, 9 am to close.

There will be new work by Ann DiSalvo and Bruce Bayard on display, and 20% off all items of art old and new.

Starting at 9am Saturday morning, Todd Barton joins Bruce for their weekly Control Voltage Therapy music session in the courtyard. There will be tales of Doppler Dog and other Railroad District Mysteries, audio-video performances, photoshop demonstrations, and spontaneity throughout the weekend.

Studio A.B is located at 621 A Street in Ashland

top left: Bruce Bayard, Weekly Press No. 914, digital print; Ann DiSalvo, Beth, pastel



Shepherd's Dream
"Manifest Magik"

Heather Brunetti is a self-taught artist living and creating in the Rogue Valley. Her work strives to translate an emotional landscape that cannot be captured with words, but that gives access to emotions that we all share in common. Heather's artistic approach is vivid and dreamy - filled with rich, bold layers of color and fluid shapes. She has enjoyed being published on the title page of the 2017 We' Moon Datebook as well as multiple other publications.

She will share her artistic flair with Shepherd's Dream starting June 1st throughout July 2018. Siskiyou Violins will be serenading while retail personnel will walk you through an inviting showroom in downtown Ashland. Come for the art, stay for the munchies and the beautifully crafted musical experience both outside and within our new location. Open daily Tuesday-Saturday 11a-6p.

top: Heather Brunetti, Aquarian Nights, 18 X 18, Acrylic on Canvas



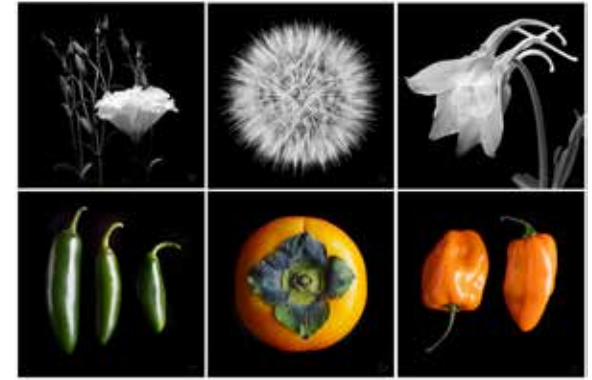
Photographers' Gallery
John Christer Petersen

John Christer Petersen is a local fine art photographer whose new show, Bandon at Waters' Edge, opens at The Photographers' Gallery At The Ashland Art Center during the 1st Friday Art Walk on June 1st. John is always looking for the fingerprints of God, so he loves to escape to Bandon By the Sea for R&R. Bandon Beach on the Oregon Coast is one of the most beautiful beaches in the United States. It is a "must do" for landscape photographers. The majestic sea stacks, rocks, and tide pools along with the ever-changing weather make for great photography.

*top: John Christer Petersen, Bandon Blues, photograph
top right: Robert Jaffe, Composite 2, photograph*

ASHLAND GALLERY ASSOCIATION
P.O. Box 241, Ashland, OR 97520
541-488-8430 www.ashlandgalleries.com

JUNE 2018
FEATURED GALLERIES



Studio 151
Robert Jaffe Photographs

Art photographer, Robert Jaffe, will be having a one-man show of his photographs for the months of June and July. The show will be held at Studio 151, a gallery located in Ashland at 151 Pioneer St. The opening will take place on First Friday, June 1st from 5:00 -7:00 PM.

The exhibit is open from noon to 4 p.m. Fridays, and 11:00-4:00 p.m. Saturdays and Sundays and by appointment during June and July. Please call 541-482-3808.

"Robert Jaffe's lens and eye are a gateway to a realm of transcendence. The scope of his work ranges from the close-up to expansive vistas. Whether his photographs are the astonishing insides of a raspberry or a full moon over Mount Shasta, you feel that perhaps you are experiencing these worldly wonders for the first time. Jaffe combines his consummate technical skill with the poetry of his vision. The camera captures reality, but Jaffe transforms the ordinary into the extraordinary."—Rebecca Gabriel

2018 Art Galleries

Ashland, Oregon



33
(See listing for location)

29
(See listing for location)

9 (See listing for location)

4
32

30

27 **25**

RAILROAD DISTRICT

16

6

35

18
20
26
13

Plaza

7

10

8

34

19

DOWNTOWN

14

17

Lithia Park

Shakespeare Theaters

21
23

East Main Street

2

1

15

11
3

Hargadine Street

28

(Southern Oregon University – 1 mile) **5** **12**

(See listing for location) **24** **31**